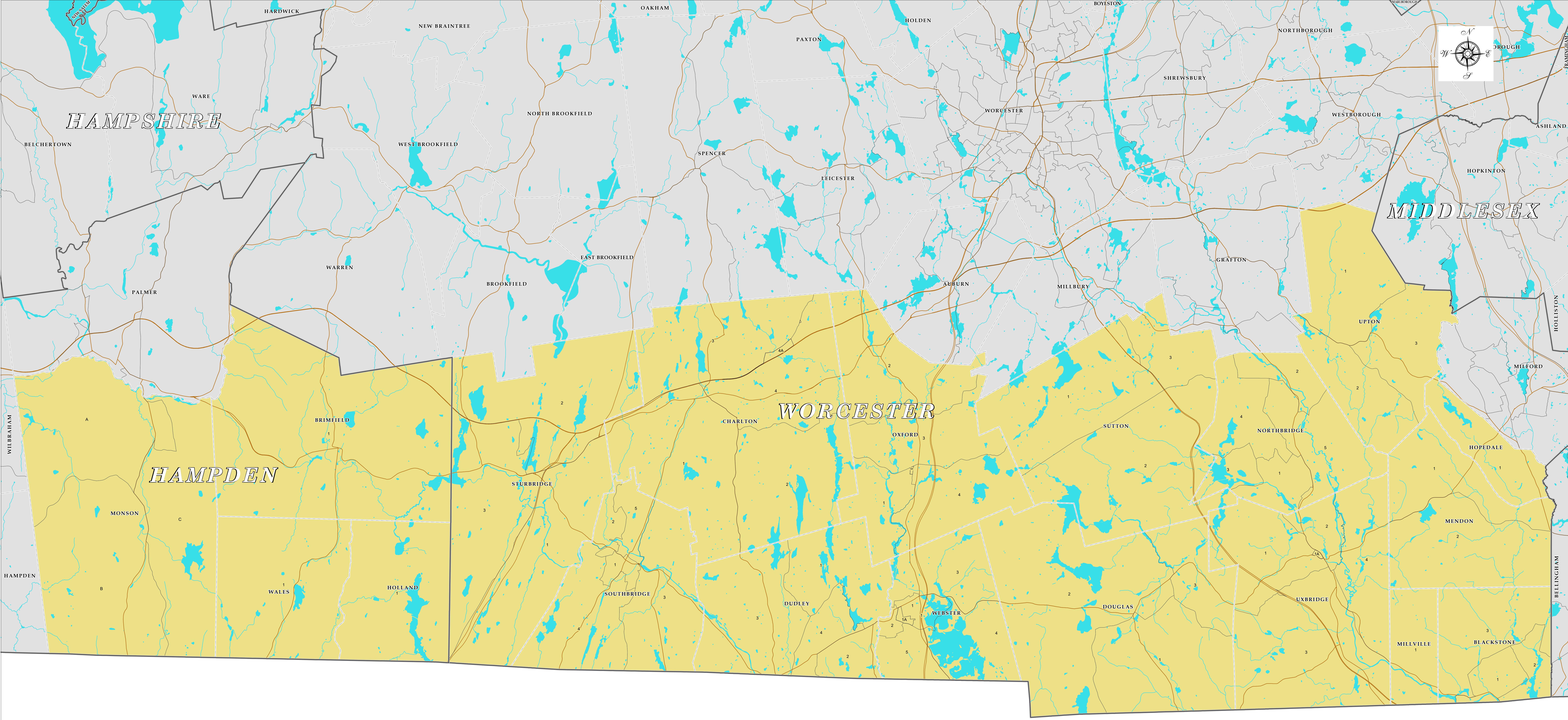


# The Commonwealth of Massachusetts

## Worcester and Hampden

### State Senate District



**Legend**

- County Boundary
- Town Boundary
- Precinct Boundary
- Ponds, Lakes, Major Rivers, Coastal Waters
- Streams, Rivers
- Major Roads



**2020 District Population - 181,709**

The Senate District depicted on this map is based on Massachusetts General Laws Chapter 57 § 3 as amended by Chapter 82 of the Acts of 2021.

Population numbers are based on the 2020 United States Census.

Map Prepared by the Office of William F. Galvin,  
Secretary of the Commonwealth