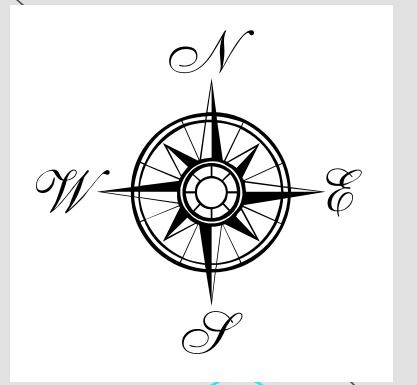
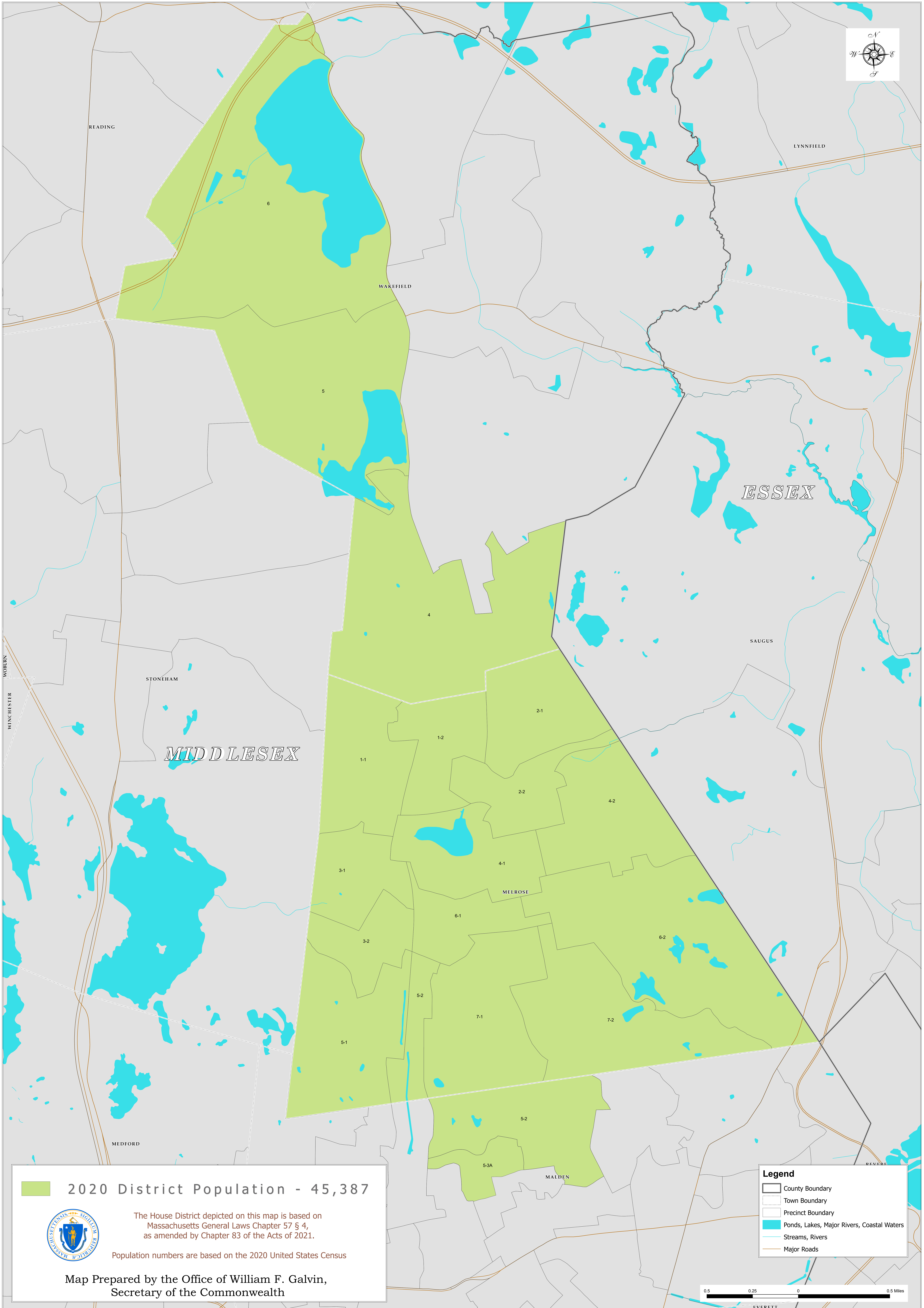


The Commonwealth of Massachusetts

Thirty-Second Middlesex

State House of Representatives



 2020 District Population - 45,387

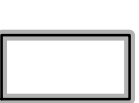
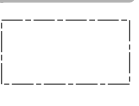





The House District depicted on this map is based on Massachusetts General Laws Chapter 57 § 4, as amended by Chapter 83 of the Acts of 2021.

Population numbers are based on the 2020 United States Census

Map Prepared by the Office of William F. Galvin,
Secretary of the Commonwealth

Legend

-  County Boundary
-  Town Boundary
-  Precinct Boundary
-  Ponds, Lakes, Major Rivers, Coastal Waters
-  Streams, Rivers
-  Major Roads

0.5 0.25 0 0.5 Miles